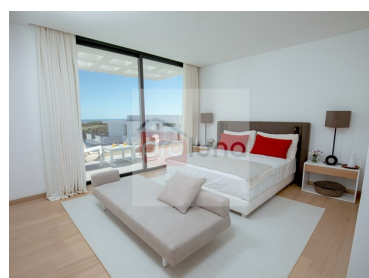




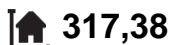
## Vila Nova de Cacela - Apartment



3  
Bedrooms



3  
Bathrooms



317,38  
Area (m<sup>2</sup>)

1 500 000 €

(EUR €)

### Modern apartment in Monte Rei, overlooking the Atlantic and golf course.

With breathtaking views of the blue waters of the Atlantic Ocean and the 18th fairway of Monte Rei Norte, our Clubhouse Residences are located in the heart of the resort, just moments from the restaurants and facilities of the magnificent Monte Rei Clubhouse.

These stunning modern properties, set in elegant landscaped gardens, have a private entrance and are built around a swimming pool, gym and residents' pool bar.

These two- and three-bedroom apartments and penthouses have been designed around spacious, open-plan spaces, which open onto generous terraces and private gardens - all with spectacular views. The overall spirit of the design is one of modernity and comfort.

Monte Rei is one of Europe's top golf destinations. Our Jack Nicklaus signature course has been voted the number 1 course in Portugal for the last 10 years and is truly one of the "must-have"



**Carlos Junior**

939602847 <sup>2</sup>

c.junior@proluna.com

T +351 281957149 <sup>1</sup> · E info@proluna.com

rua 1 de maio, 32  
AMI AMI 10970

<sup>1</sup> (Call to national fixed network) | <sup>2</sup> (Call to national mobile network)



courses in the world. Set on 1,000 acres of the stunning Eastern Algarve, Monte Rei is a full-service resort, just minutes from pristine beaches and stunning local towns.

## INTERIORS & FINISHES

Each apartment has been carefully designed and beautifully decorated by the renowned interior design firm Sá Aranha & Vasconcelos, based in Lisbon. All residences are sold fully furnished, with HVAC system, underfloor heating and kitchens with integrated Siemens appliances.

## Property Features

- Heating
- Dishwashing machine
- Equipped kitchen
- Private condominium
- Views: Sea views, Golf views
- Security alarm
- Washing machine
- Air conditioning
- Terrace
- Laundry
- Video entry system
- Double glazing



**Carlos Junior**

939602847 <sup>2</sup>

c.junior@proluna.com

**T +351 281957149 <sup>1</sup> · E info@proluna.com**

**rua 1 de maio, 32**

**AMI AMI 10970**

<sup>1</sup> (Call to national fixed network) | <sup>2</sup> (Call to national mobile network)